

Legend:

- Gaga Rotator
- Unit Number
- Channel
- Template
- Unit Number
- Channel
- 7.5" Barndoor
- Unit on Deck Plate
- Unit on Sidearm on Vertical Pipe
- Unit Yoked Out 90 Degrees

Symbols:

- Source4 18 Degree 750W
- Source4 26 Degree 750W
- Source4 36 Degree 750W
- Source4 50 Degree 750W
- Altman PH-X 2 18 Degree LED
- Altman PH-X 2 36 Degree LED
- Altman PH-X 2 50 Degree LED
- Robe Robin 600 LED Moving Wash
- Altman SpectraCyc 200 RGBW

Hang Plot

Plate 1 of 2

Ferguson Studio Theater
April 2018

Scale: 1/4" = 1' Version: 1 3/14/2-18

NOVEMBER 9-11 & 16-18, 2018

Director: Gregg Lloyd Lighting Designer: Matthew Ishaie

Technical Director: David "Smk" Paul Master Electrician: Mackenzie Edwards

Notes:

- All instruments are spaced 15' from nearest pipe intersection unless otherwise indicated.
- Hash marks on lighting positions indicate 15' intervals.
- Fixtures with the same channel should be twofolded into the same circuit.
- All Source4 units are 575w unless otherwise noted.
- Basic granulation is for reference only. Please do not scale from this drawing.
- The lighting designer is not qualified to determine structural soundness of this drawing, which represents ideas and suggestions which should be executed by qualified personnel.

A

A

B

B

1

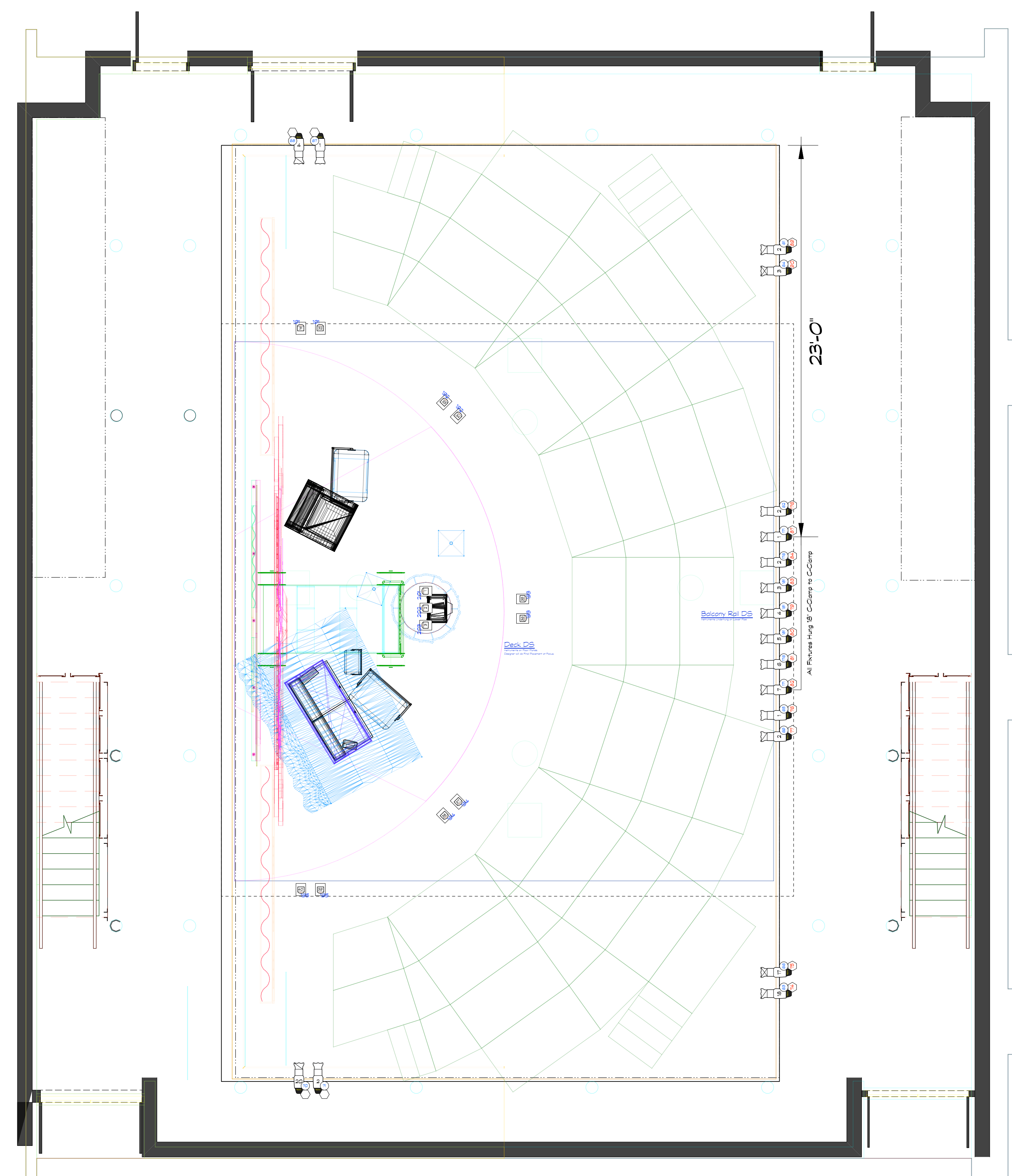
2

3

1

2

3



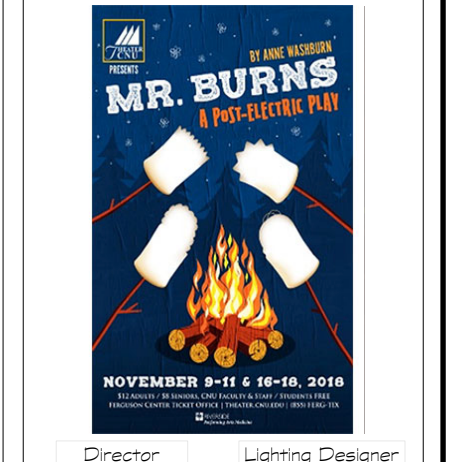
Legend:

- Gaga Rotator
- Unit Number
- Channel
- Template
- Unit Number
- Channel
- 7.5" Barndoor
- Unit on Deck Plate
- Unit on Sidearm on Vertical Pipe
- Unit Yoked Out 90 Degrees

Symbols:

- Source4 18 Degree 750W
- Source4 26 Degree 750W
- Source4 36 Degree 750W
- Source4 50 Degree 750W
- Altman PH-X 2 18 Degree LED
- Altman PH-X 2 36 Degree LED
- Altman PH-X 2 50 Degree LED
- Rabe Robin 600 LED Moving Wash
- Altman SpectraCyc 200 RGBW

Deck Plot
 Plate 2 of 2
 Ferguson Studio Theater
 April 2018
 Scale: 1/4" = 1' Version: 1 3/14/2018



Director: Gregg Lloyd
 Lighting Designer: Matthew Inahe
 Technical Director: David 'Smk' Paul
 Master Electrician: Mackenzie Edwards

Notes:

- All instruments are spaced 15' from nearest pipe intersection unless otherwise indicated.
- Hash marks on lighting positions indicate 15' intervals.
- Fixtures with the same channel should be twofolded into the same circuit.
- All Source4 units are 575w unless otherwise noted.
- Basic granulation is for reference only. Please do not scale from this drawing.
- The lighting designer is not qualified to determine structural soundness of this drawing, which represents ideas and suggestions which should be executed by qualified personnel.