

Legend:

- Gaga Rotator
- Unit Number
- Channel
- Template
- Unit Number
- Channel
- 7.5" Barndoor
- Unit on Deck Plate
- Unit on Sidearm on Vertical Pipe
- Unit Yoked Out 90 Degrees

Symbol:

- Source4 18 Degree 575W
- Source4 26 Degree 575W
- Source4 36 Degree 575W
- Source4 50 Degree 750W
- Aitman PH-X 2 18 Degree LED
- Aitman PH-X 2 36 Degree LED
- Aitman PH-X 2 50 Degree LED
- Robe Robin 600 LED Moving Wash
- Aitman SpectraCyc 200 RGBW

Hang Plot

Plate 1 of 2

Ferguson Studio Theater
November 2017

Scale: 1/4" = 1' Version 2 10/27/2017

PHOTOGRAPH
51

NOVEMBER 10 - 12 & 17 - 19, 2017

Director: Denise Gilman Lighting Designer: Matthew Inhee
 Technical Director: Tonya Sweet Master Electrician: Alex James

Notes:

- All instruments are spaced 18" C-to-C to C-clamp unless otherwise indicated.
- Hash marks on lighting positions indicated 18" intervals.
- All Source4 units are 575w unless otherwise noted.
- Basic gridlines are for reference only. Please do not scale from this drawing.
- The lighting designer is not qualified to determine structural soundness of this drawing, which represents ideas and suggestions which should be executed by qualified personnel.

A

A

B

B

1

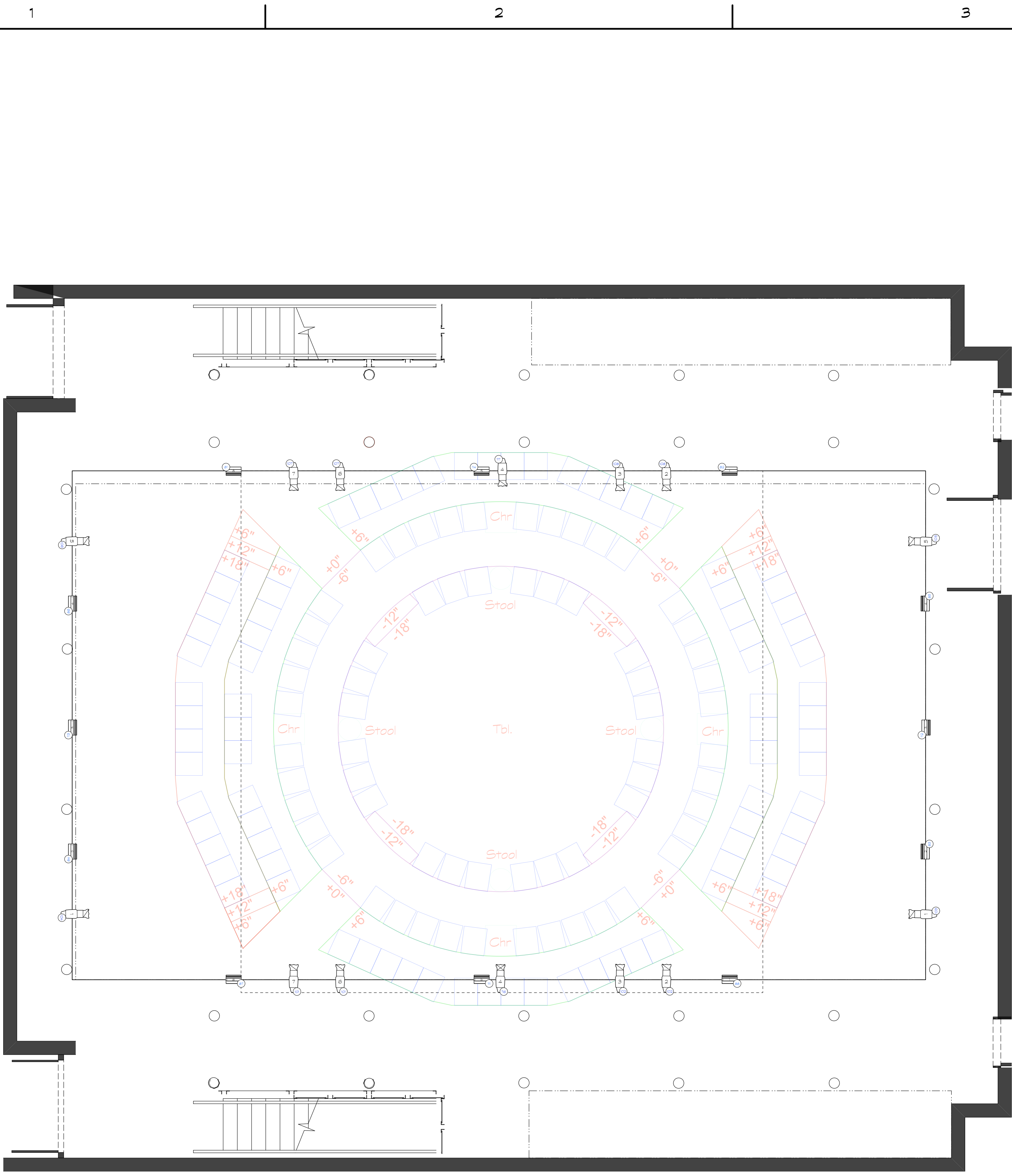
2

3

1

2

3



Legend:

- Gaga Rotator
- Unit Number
- Channel
- Template
- Unit Number
- Channel
- 7.5" Barndoor
- Unit on Deck Plate
- Unit on Sidearm on Vertical Pipe
- Unit Yoked Out 90 Degrees

Symbol:

- Source4 18 Degree 575W
- Source4 26 Degree 575W
- Source4 36 Degree 575W
- Source4 50 Degree 750W
- Altman PH-X 2 18 Degree LED
- Altman PH-X 2 36 Degree LED
- Altman PH-X 2 50 Degree LED
- Robe Robin 600 LED Moving Wash
- Altman SpectraCyc 200 RGBW

Balcony Plot
 Plate 2 of 2
 Ferguson Studio Theater
 November 2017
 Scale: 1/4" = 1' Version 2: 10/27/2017

PHOTOGRAPH
 51
 NOVEMBER 10 - 12 & 17 - 19, 2017

Director: Denise Gilman
 Lighting Designer: Matthew Inhee
 Technical Director: Tony Sweet
 Master Electrician: Alex James

Notes:

- All instruments are spaced 18" C-to-C unless otherwise indicated.
- Hash marks on lighting positions indicated 18" intervals.
- All Source4 units are 575w unless otherwise noted.
- Basic grouping is for reference only. Please do not scale from this drawing.
- The lighting designer is not qualified to determine structural soundness of this drawing, which represents ideas and suggestions which should be executed by qualified personnel.

A

A

B

B

1

2

3

1

2

3