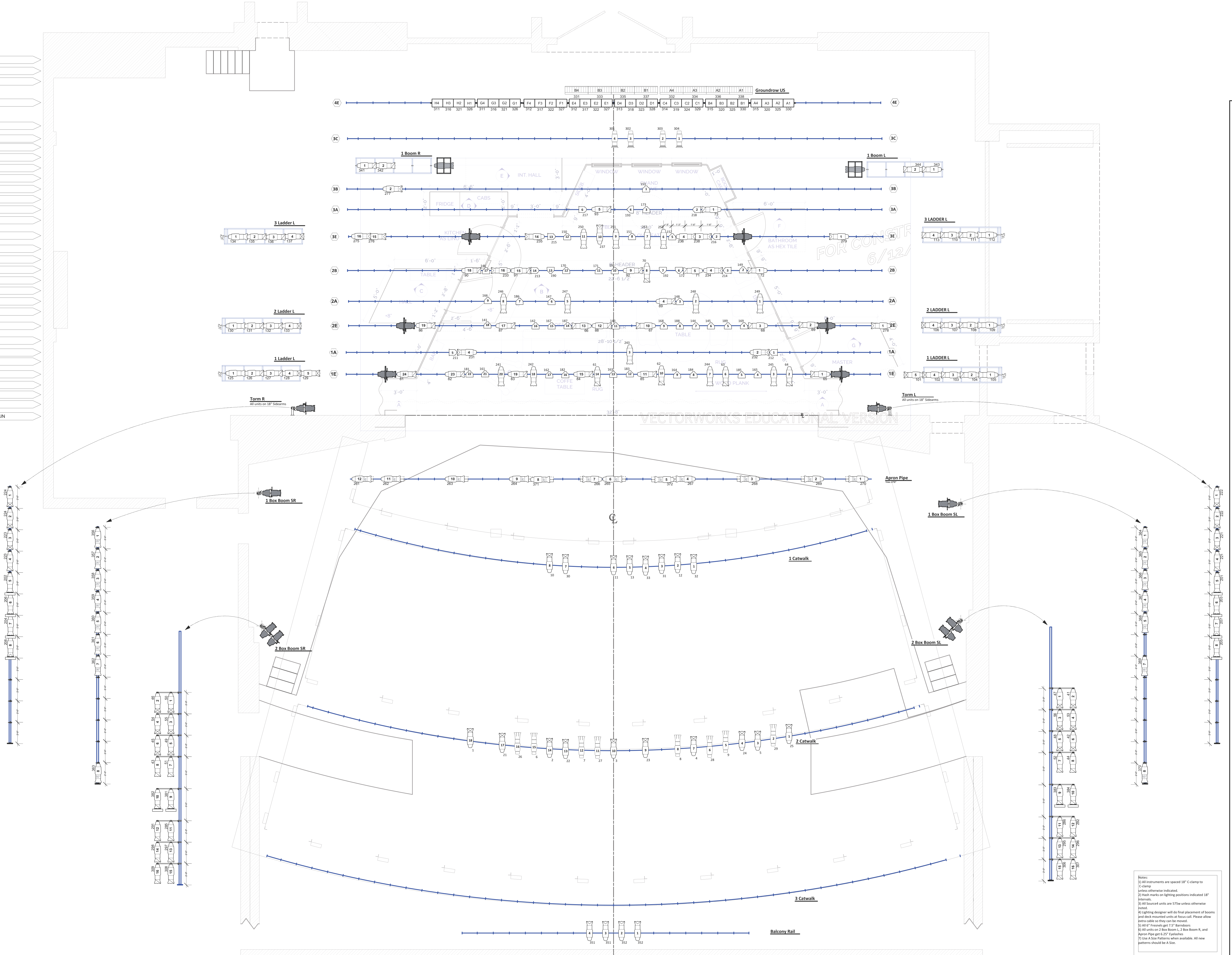


- 30 33"x4"
- 29 32"x 1/2" White Cyc
- 28 31"x 3/4"
- 27 30"x0"
- 27 30"x0"
- 26 Black Scrim
- 25 15 3C Electric
- 24
- 23
- 22
- 21
- 20 27 3B Electric
- 19 3B Electric
- 18 27 3B Electric
- 17 3 Beam
- 16 27 3rd Electric
- 15 27 2C Electric
- 14
- 13 27 2B Electric
- 12 20"x0" 2 Beam
- 11
- 10 27 2A Electric
- 9
- 8 27 2nd Electric
- 7 1 Beam
- 6 27 1A Electric
- 5
- 4 27 1st Electric
- 3
- 2
- 1 H Drapes
- FC 2" FIRE CURTAIN



Legend:

- Unit Number
Wattage
(Channel)
- Wattage
Unit Number
(Channel)
- 7.5" Barndoor
- Unit on Deck Plate
- Unit on Sidarm
on Vertical Pipe

Symbols:

- Sourced 14 Degree
- Sourced 19 Degree
- Sourced 26 Degree
- Sourced 36 Degree
- Sourced 50 Degree
- Sourced 70 Degree
- Sourced PAR
Medium Flood
- Altman
6" Fresnel (New)
- Altman
Sky Cyc 4 Cell
- Altman
Z54 (Ministrip)

Hang Plot
Plate 1 of 1
Culbreth Theater
July 2015
Scale: 1/4"=1' Version: 1 7/11/2015

Heritage Theatre Festival Presents

The ODC Couple

Director: Dave Dalton
Lighting Designer: Matthew Ihee
Scenic Designer: J. Patrick Adair
Master Electrician: Chelsea Dickens

Notes:

- 1) All instruments are spaced 18" C-clamp to C-clamp unless otherwise indicated.
- 2) Mark marks on lighting positions indicated 18" intervals.
- 3) All Sourced units are 57W unless otherwise noted.
- 4) Lighting designer will do final placement of booms and deck mounted units at floor call. Please allow extra cable as they can be moved.
- 5) All 6" Fresnels are 2.5" Barndoors.
- 6) All units on 2 Box Room L, 2 Box Room R, and Apron Pipe are 6.25" Fresnels.
- 7) Use A Size Patterns when available. All new patterns should be A Size.